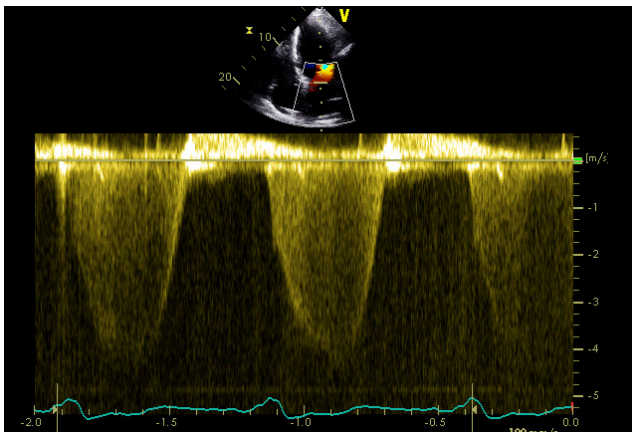


THE VALVES

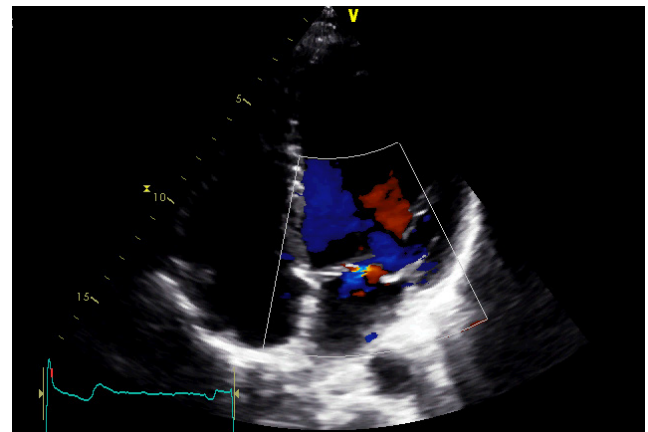
Diagnosing mitral regurgitation

Assessing severity of mitral regurgitation:

	Mild	Moderate	Severe
Neck width (mm)	< 3	> 3 and < 7	7 or more
Flow recruitment in left ventricle	None	Some	Lots
Continuous wave (CW) signal	Incomplete, faint	Moderate, complete	Dense, holosystolic



Assessing severity



Mitral regurgitation